



NARENCO
National Renewable Energy Corporation
227 - B Southside Dr.
Charlotte, NC 28217
Main: 704-930-7700
Fax: 704-930-7710
www.narenco.com

SCALE: 1" = 600'

BUFFER LEGEND

- BUFFER LEVEL 1
- BUFFER LEVEL 2
- BUFFER LEVEL 3

NOTE: THERE IS A 100' SETBACK FROM THE PROPERTY LINE AND 300' SETBACK FROM RESIDENCES.

THIS DOCUMENT CONTAINS PROPRIETARY INFORMATION OF NATIONAL RENEWABLE ENERGY CORPORATION, AND ITS RECEIPT OR POSSESSIONS DOES NOT CONVEY ANY RIGHTS TO REPRODUCE, DISCLOSE ITS CONTENTS, OR TO MANUFACTURE, USE, OR SELL ANYTHING IT MAY DESCRIBE.

CLIENT LOGO/INFORMATION:

PROJECT NAME

CHESTNUT SOLAR, LLC

SITE LOCATION LATITUDE, LONGITUDE
40°31'2.43" N, 83° 4'42.42" W
SITE ADDRESS OR INTERSECTION
MYERS RD, MARION, OHIO 43302

PROJECT DETAILS

RACKING TYPE	SAT-GCR
RACKING TYPE	BI-FACIAL
MODULE POWER	540W
DC/AC RATIO	1.30
MODULE QTY	164,372
26M STRINGS	6,322
KW DC POWER	88,760.88 kW DC
KW AC POWER	68,000.00 kW AC
PITCH	20.5°
INVERTER QTY	19
TOTAL LEASED ACREAGE	544.06 AC
TOTAL ARRAY ACREAGE	404.30 AC

GENERAL LEGEND

- 3 STRING 78 MODULE
- 2 STRING 52 MODULE
- GRAVEL ENTRANCE ROAD
- LAYDOWN AREA
- WETLAND / FLOODWAY
- PROJECT BOUNDARY
- PROPERTY LINE
- PV SETBACK
- 6' CHAIN-LINK FENCE + 1'-0" BARBED WIRE
- PROPOSED OVERHEAD POWER LINES
- EXISTING OVERHEAD POWER LINES OHE

REVISION LOG

DRAWN BY	HECTOR SOBERON
CHECKED BY	
PLOT STAMP	

REV	DATE	DESCRIPTION
	8.15.2022	LAYOUT

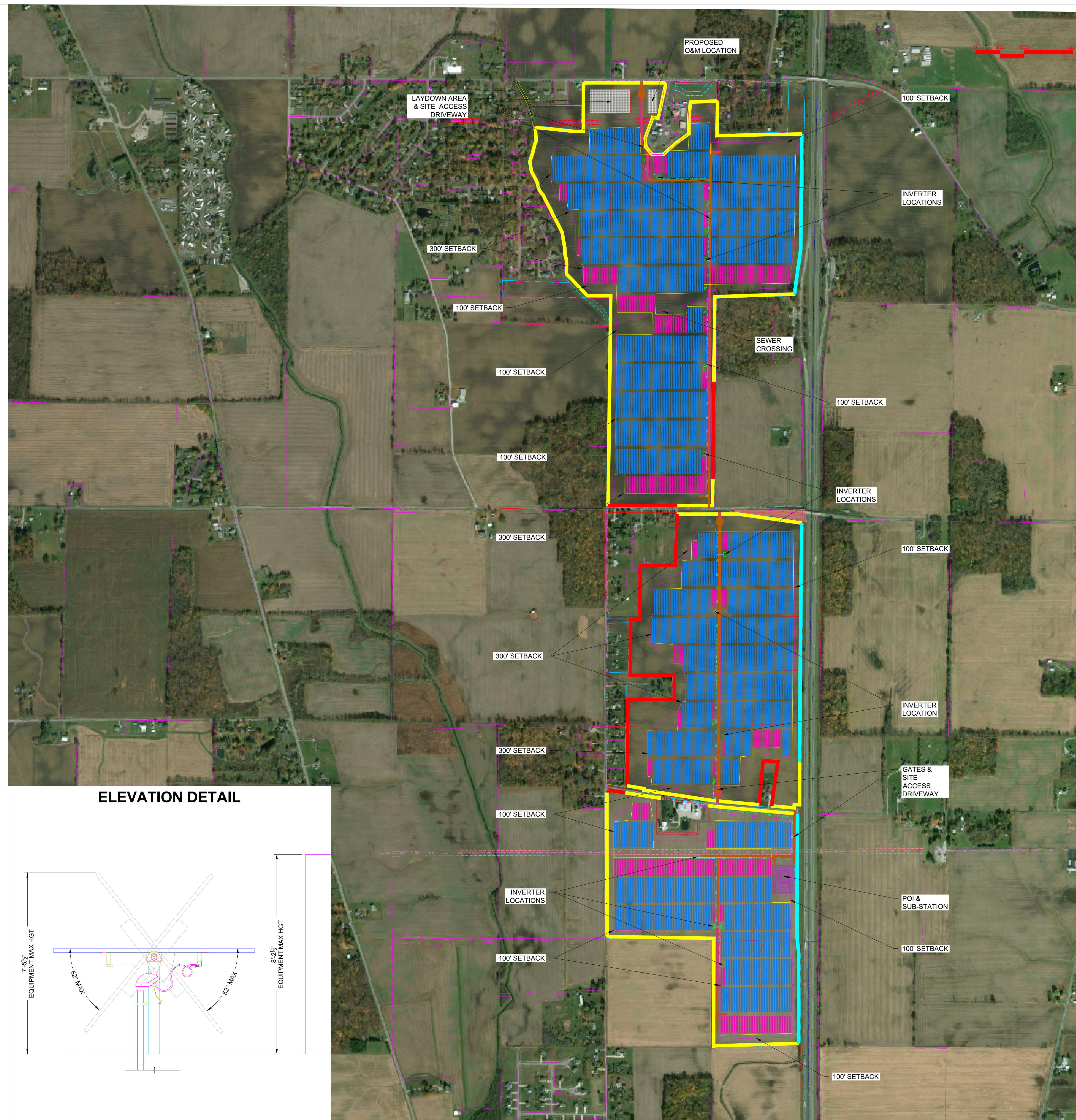
SHEET SERIES

SHEET NAME

EXHIBIT

SHEET NUMBER

EX-01



ELEVATION DETAIL

