

# Public Information Meeting; Chestnut Solar, LLC

Ohio Power Siting Board (“OPSB”) Case No. 22-0988-EL-BGN

MARION COUNTY, OHIO

Tuesday, December 6th, 2022



# Chestnut Solar is a wholly owned subsidiary of National Renewable Energy Corporation (NARENCO)

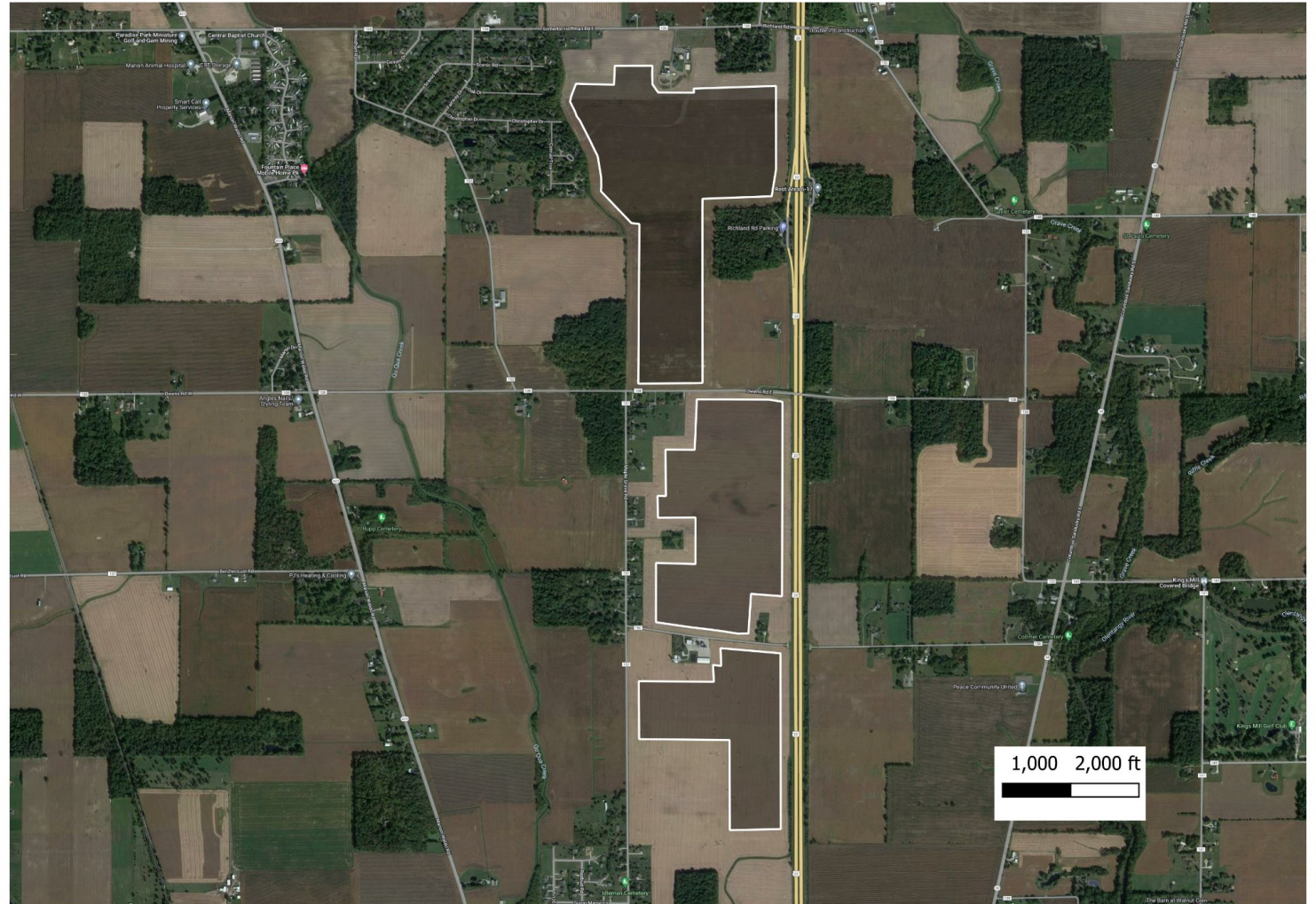
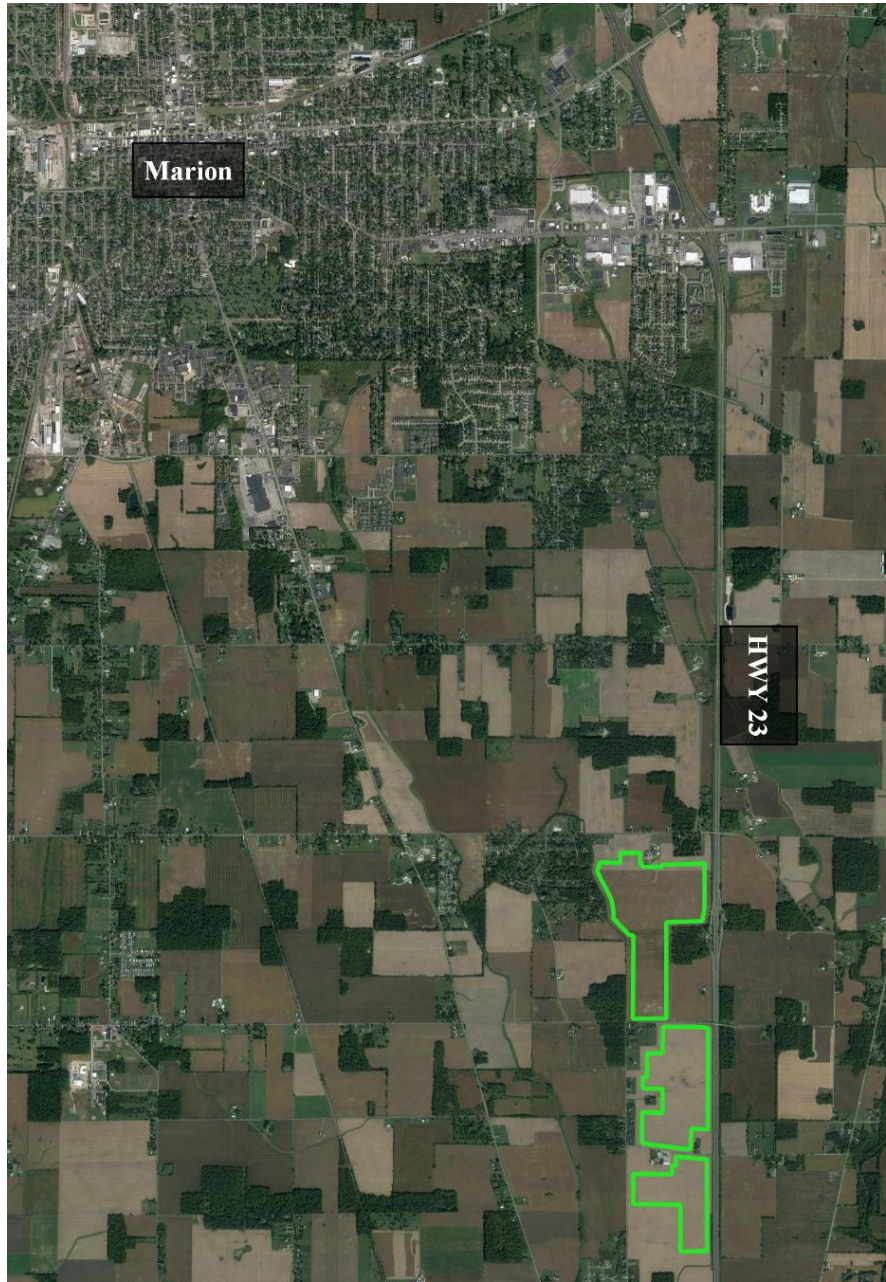
---



- Founded in Charlotte, NC in 2009
- 100% Employee Owned
- Engineering, Procurement & Construction (“EPC”) Firm and Independent Power Producer (“IPP”) focused on the development, construction, and operation of utility-scale solar projects
- Extensive experience in the Southeast growth in the Mid-Atlantic and Midwest regions



# Project Location & Boundaries









# Sample Images of project site (before/after)

Images and rendering based on the actual project site. Modules appear with the accessory farm structures and farm equipment and an additional sample of planned viewshed near residences in 5-7 years.



# Examples of Reviews by State and Federal Agencies

---

## ●Federal

- Federal Aviation Administration & Dept. of Defense - Aeronautical Study
- U.S. Fish and Wildlife Service - Habitat Survey
- Army Corps of Engineers - Wetlands and Watercourse Delineation
- U.S. Environmental Protection Agency - Phase I Environmental Site Assessment
- Federal Energy Regulatory Commission - Operational Oversight

## ●State

- Ohio Environmental Protection Agency - Erosion and Sedimentation Control Plan
- Ohio Department of Transportation - Construction Route Study
- Ohio Department of Natural Resources - Habitat Survey
- Ohio State Historic Preservation Office - Architectural and Archaeological Surveys
- Ohio Power Siting Board - Certificate of Environmental Compatibility and Public Need
- Ohio Department of Health - Operational Sound Assessment & Hydrogeology Report
- Ohio Department of Development - Economic Impact Analysis
- Ohio Department of Agriculture - Land Use Analysis

# What is a Utility-Scale Solar Farm?

---

1. Many solar panels are connected to make a solar farm
2. The panels rotate during the day to follow the path of the sun
3. The system is directly connected to the utility's existing infrastructure
4. The power generated is used to power local homes and businesses

